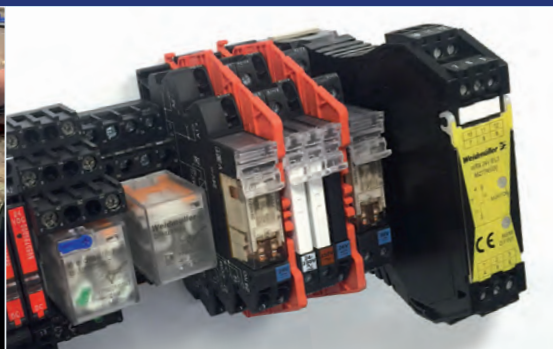


# APHASLAM WORKSHOP



Providing bespoke solutions to  
your electrical installation problems



## Our wide range of services

110v Site Services Products

Copper Earth Bars

CSD Sealing Systems

Custom-made Cable Marking and Terminal Numbering

Custom-made Disconnect Switches

Custom-made Socket Combination

Custom-made Stainless-steel Isolation and Mains Distribution

Explosion-Proof and Hazardous Area Products

Fire-Rated Junction Boxes

Terminal Junction Boxes for Industrial and Explosion-proof Applications

Terminal assembly

Trace Heating Products

## The Workshop at AP Haslam Ltd

has been providing bespoke solutions to Ireland's electrical and construction industry for over 30 years.

Along with day-to-day orders for enclosures and glands we also create solutions for one-offs or prototype orders.

To give you a flavour of what the **AP Haslam Workshop** does, here are a few examples of the type of solutions we have produced recently.



## CASE STUDY 1

An event manager in Dublin was constantly coming up against problems when it came sourcing and redistributing power at outdoor events



The varied locations he worked in, such as marquees in domestic homes or hotel lawns, presented various challenges when it came to power supply such as distance from the main supply and the availability of sockets.

Our customer came to the **AP Haslam Workshop** looking for a portable and flexible solution with some specific requirements. For example he needed a single and three phase power supply with individual MCB and RCD protection.

The customer preferred more single than three phase outputs and the unit needed to be portable and have a good frame to stand alone in any venue.

**Our Solution:** The **AP Haslam Workshop** produced a quick overview drawing explaining how the propose solution worked and following discussions and some small alterations the Haslam standalone socket distribution combo was assembled.

*The frame was part of a range which the workshop had identified for similar jobs in the past.*

*Made of powder coated rolled steel, it's size and weight was perfect for this customers requirement and use. This particular combination unit needed two distribution boards and the frame provided adequate space to house both boards and socket units.*

*The unit which was sourced and produced in 8 working days was ready for a large wedding marquee in an agricultural setting.*

*The unit weighted approx 8 kilos, light enough for portability and heavy enough to withstand being used outdoors. Naturally all components met the relevant ESB standard for portable combination units.*



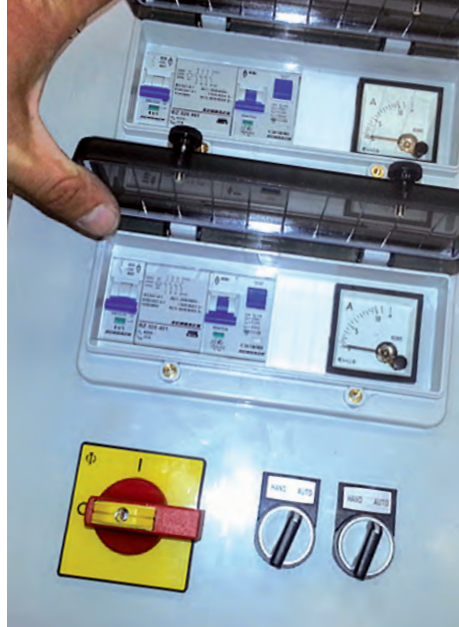
## CASE STUDY 2

A major brewery in Dublin were installing piping throughout their new plant and required a trace heating solution



Part of the customer requirement was to insure that the proposed system was energy efficient – by not allowing the system to heat pipes which were not in use.

The pipes in question were mainly for use outside the plant – with limited space available for installation.



**Our Solution:** Following the delivery of a spec and some refinements based on feedback from the **AP Haslam Workshop** the power control monitoring system prototype was created and agreed upon.

The system had a control panel to allow manual intervention or to run the system automatically.

The system also housed a control MCB for energising the coil as well as circuit protection and amp meter. The cover (modular access window) was fully weather protected with an IP67.

**Call the AP Haslam Workshop on 01453 2522 to receive a quote for your next installation project.**

## CASE STUDY 3

A world-leading food producer wanted to build a state-of-the-art food sampling area in their new premises just outside Dublin



The requirement was to allow the sampler and the person controlling the sampling process to communicate from either side of two segregated areas using green and red buttons through a client-specified, two-gang illuminated push button control station.

Limited space constraints in the sampling area had to be taken into account when the plates etc. were designed, resulting in the **AP Haslam Workshop** producing a bespoke stainless steel plate to fit a recess wall space that did not allow for the normal control unit size.



**Our Solution:** **AP Haslam Workshop** produced a two gang illuminated push button control station both of which worked in conjunction with each other – and a stainless steel plate to fit the non-standard size wall recess.

The control station was 600 x 400 x 210 in depth. Each control panel required 4 inputs and 2 outputs from the PLC to facilitate the sampling process. The wiring was simplified to allow on-site installation – wiring two sets of terminals to 34 10-way female sockets. This control panel operates a total of 17 dual independent units.

## CASE STUDY 4



The **AP Haslam Workshop** frequently handles requests for electrical items that need to be used within hazardous environments and where there is potential for an explosion due to gas or dust particles in the atmosphere

This radio key fob was not ATEX certified and therefore not suitable to stand alone in a hazardous area.

Circuit protection within a hazardous area is one of the most frequent requests the **AP Haslam Workshop** receives, given the potential for sparks being produced to create an explosion.

**Our Solution:** The fob was installed within an EExd enclosure featuring a tempered glass front window to allow the fob signal to work effectively – while still protecting it in the hazardous area.



## Top-Tip

*Wi-Fi has become an essential component in most business premises and plants.*

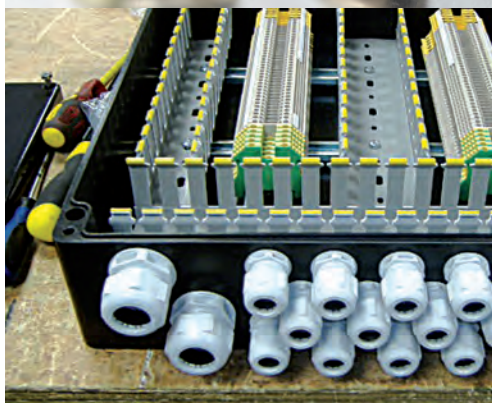
*A business with **Hazardous Areas** needs to enclose wi-fi routers as they emit heat into the atmosphere.*



## Glands & Enclosures

By ordering pre-assembled enclosures from **AP Haslam Workshop** you can combine components from various suppliers to create the enclosure which best suits your specifications and price. We have available a wide range of enclosures and glands to suit your needs.

Call us on **01453 2522** or drop into **The Workshop**, 14 Sunshine Industrial Estate, Crumlin Road, Dublin 12.



## CASE STUDY 5

### 40 way input/ output unit

Whilst overseeing the completion of a large infrastructural development in Dublin, our customer needed to satisfy the requirements of a Health & Safety review around fire alarm location.

The requirement was to be able to identify the exact location of each individual fire alarm within various areas in the plant, if activated.

The individual units had to be capable of expansion – allowing new alarms to be connected over time.

**Our Solution:** *The requirement was to create a series of input/output enclosures that provided enough space to house up to 40 units per enclosure, allowing for future expansion.*

*The restricted space allowed for the proposed enclosure meant we could only use a 600x600 enclosure in which we had to accommodate a maximum of 40 input/output units.*

*The AP Haslam Workshop solution was passed by programme management and signed off by a new Health & Safety review, addressing the current and possible future needs of the plant, while keeping each alarm identified as per the specification.*



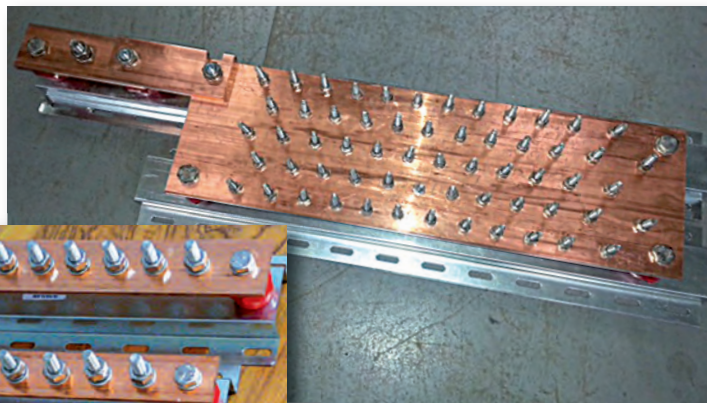
**For help and advice  
before starting on a  
bespoke project,  
be sure to call the  
AP Haslam  
Workshop  
on 01453 2522**

## Earth Bars

The **AP Haslam Workshop** offer a full range of standard stocked earth bars as well as producing custom made earth bar solutions.

We completed an order for a customer who needed sixty M8 connections with a disconnect facility. However, he had some constraints when it came to the amount of space in the area he was working in...

**Our Solution:** *To source a 150mm x 10mm flat copper bar and use it to install 60 (five rows of twelve) M8 connections. Bearing in mind the finished product's weight, this was assembled onto two lengths of larger top-hat rail making the final wall mounting simple.*



And there's more...

## Intrinsically Safe Terminal Boxes

For hazardous area use which can be used in **Intrinsically Safe Systems** without certification – subject to certain voltage and amp restrictions.



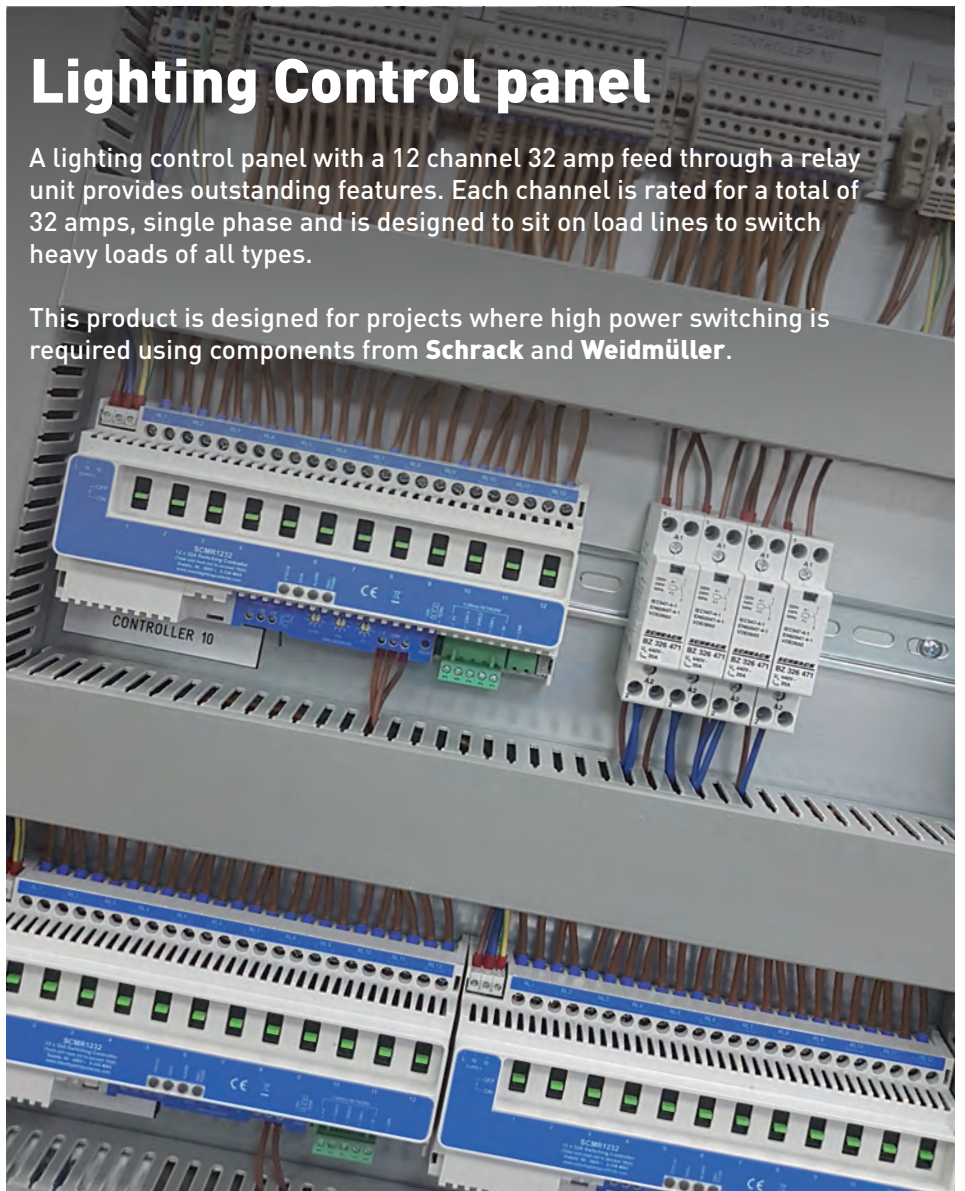
Small power terminal junction boxes which we produce regularly in the **AP Haslam Workshop** – with some TB12 316L Marshalling Boxes for good measure.



## Lighting Control panel

A lighting control panel with a 12 channel 32 amp feed through a relay unit provides outstanding features. Each channel is rated for a total of 32 amps, single phase and is designed to sit on load lines to switch heavy loads of all types.

This product is designed for projects where high power switching is required using components from **Schrack** and **Weidmüller**.



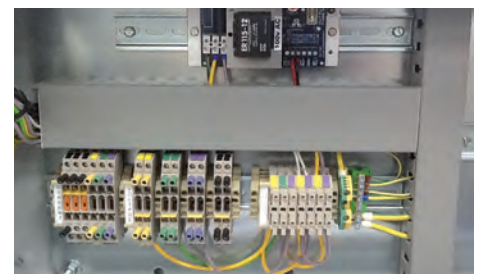
## JUNCTION BOXES

Components from two of our main quality suppliers – **WISKA** junction boxes using **Weidmüller** terminals.



## IPP wind farm monitoring cabinet

**AP Haslam Workshop** have produced this cabinet, which allows windfarm managers to gauge the quality and amount of power being generated.



# Renting or buying?

## Talk to us about your labelling and terminal printing needs



The AP Haslam Workshop supplies the advanced **MARKINGENIUS 3** to satisfy all your cable and terminal identification needs.

Whether you are renting or purchasing, contact **AP Haslam** on **01453 2522** for a demonstration of the **MARKINGENIUS 3**.



## Or we do your label printing for you!

Alternatively to renting or buying, the **AP Haslam Workshop** cable identification facility can produce a wide variety of labels for lettering, numbering and signage – to whatever your specific requirement might be.

Our advanced **MARKINGENIUS 3** is ideal for both small and large cable and terminal identification orders. Allow us to help you make your mark.

**Talk to the AP Haslam Workshop on 01453 2522 or email : [sales@aphaslam.ie](mailto:sales@aphaslam.ie)**



# APHASLAM WORKSHOP

14 Sunshine Industrial Estate, Crumlin Road, Dublin 12

Tel: +353 (1) 453 2522 | Fax: +353 (1) 453 2949

Email: [sales@aphaslam.ie](mailto:sales@aphaslam.ie)